

1	Getting started with Dawn.....	2
1.1	Preconditions	2
1.1.1	Server Management.....	2
1.1.2	Servlet container.....	3
1.1.3	Database	3
1.2	Install the Dawn Plugins	3
1.3	Install the server	4
1.3.1	Import the server project	4
1.3.2	Initialize the database	8
1.3.3	Start the server.....	9
1.3.4	Starting the client	9
2	Troubleshooting	19
2.1	OutOfMemory... ..	19

http://mfdawn.wiki.sourceforge.net/getting_started_with_dawn

1 Getting started with Dawn

1.1 *Preconditions*

If you do not have any Eclipse instance, download it. I decided to use the Modelling IDE, because it holds all needed.

<http://www.eclipse.org/downloads/download.php?file=/technology/epp/downloads/release/ganymede/SR2/eclipse-modeling-ganymede-SR2-incubation-win32.zip>

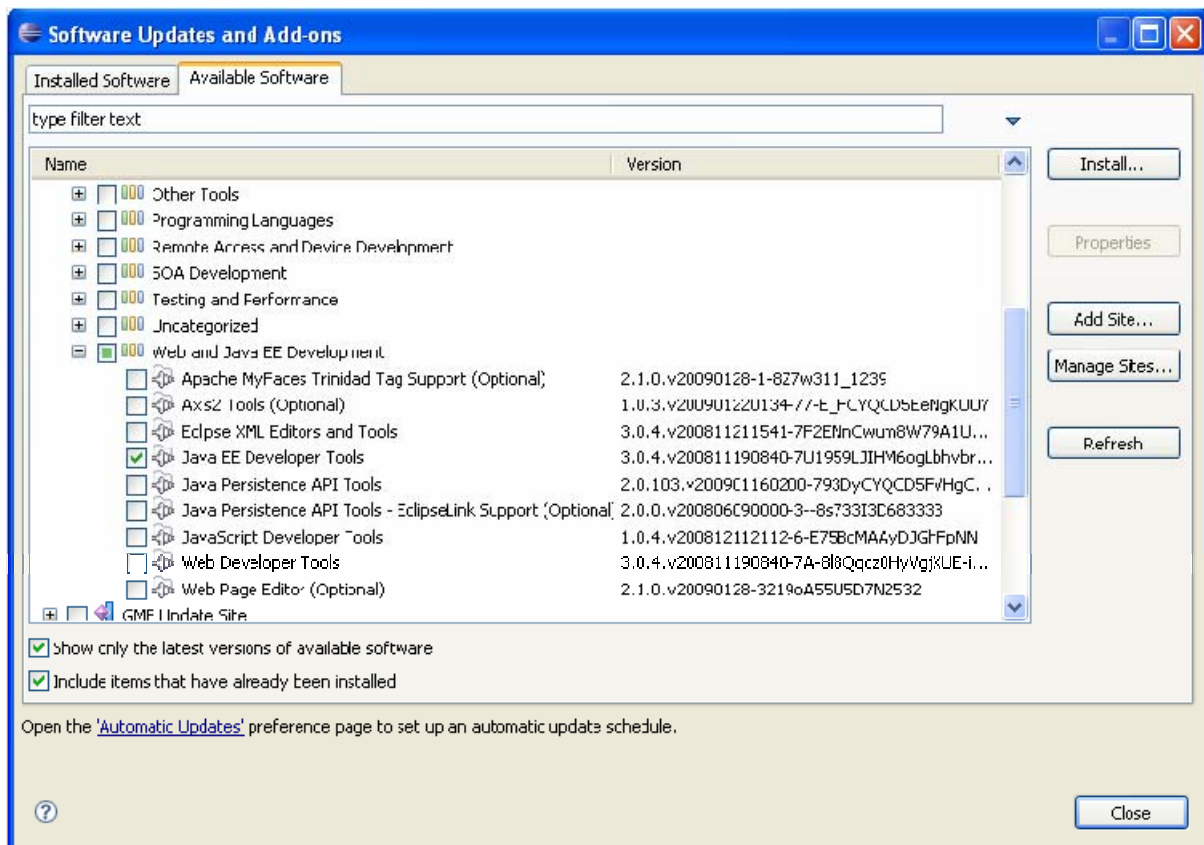
As always, just download and extract it to a folder of your choice.

1.1.1 Server Management

In previous versions Dawn used the Sysdeo Plugin to start the server. This has now changed. Now the server comes as “Dynamic Web Project” so you can run Dawn in any Servlet Container.

Note: in further version there will be a complete separation between the actual server and the web components to allow running the server without web functionality.

To manage the server you need some Web Tools Plugins. Open the Update Manager “Help->Software Updates...” and install the Plugins shown in the next figure.



1.1.2 Servlet container

The tutorial will use tomcat 6.0 as servlet container. You are free to use any other Servlet container (e.g. Jetty). Version 6.0 of the tomcat can be downloaded from here:
<http://tomcat.apache.org/download-60.cgi>

1.1.3 Database

You will need a database to store the data of the server. This tutorial will use a mysql database, but again you are free to use your own setting.
 In Your database server create a new databse called “dawn”

1.2 Install the Dawn Plugins

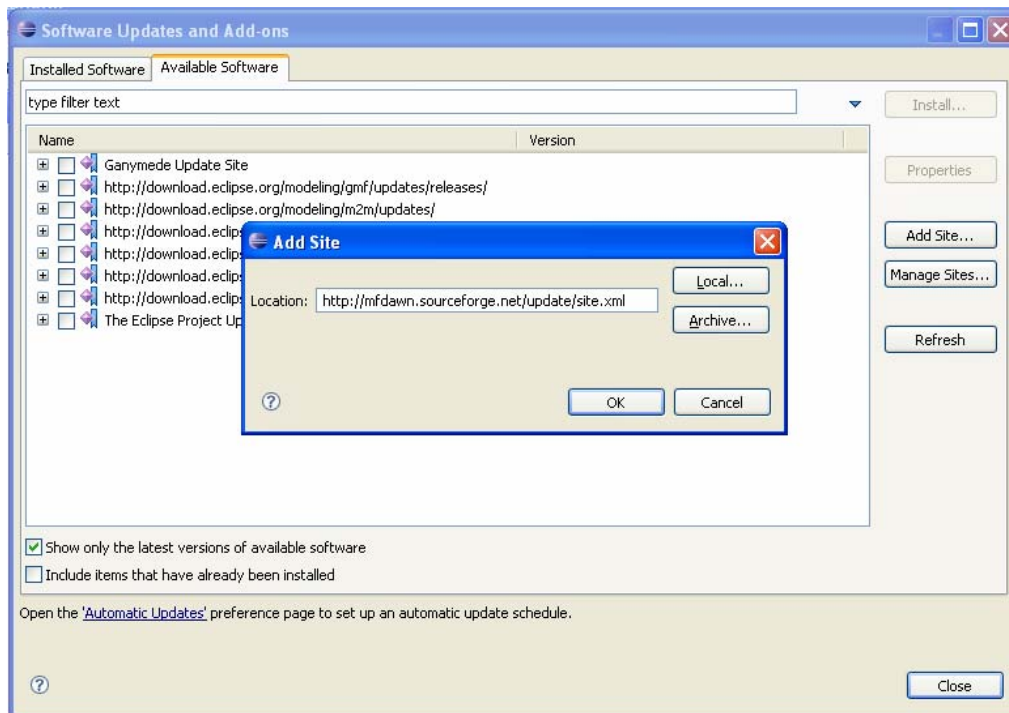
Before we can istall the Plugins we need to install the needed dependencies.

For installing the runtime and the examples you do not need any other plugin. If you want to you the codegen feature you need to install openArchitectureWare 4.3.1. This can be done using the oAW update site

<http://www.openarchitectureware.org/updatesite/milestone/>

Installing the plug-ins is quite easy. Open The Update Manager (Help->Software Updates...).

Add the Dawn update page (<http://mfdawn.sourceforge.net/update/site.xml>) as a new site.



From the newly created update site install all features.

1.3 Install the server

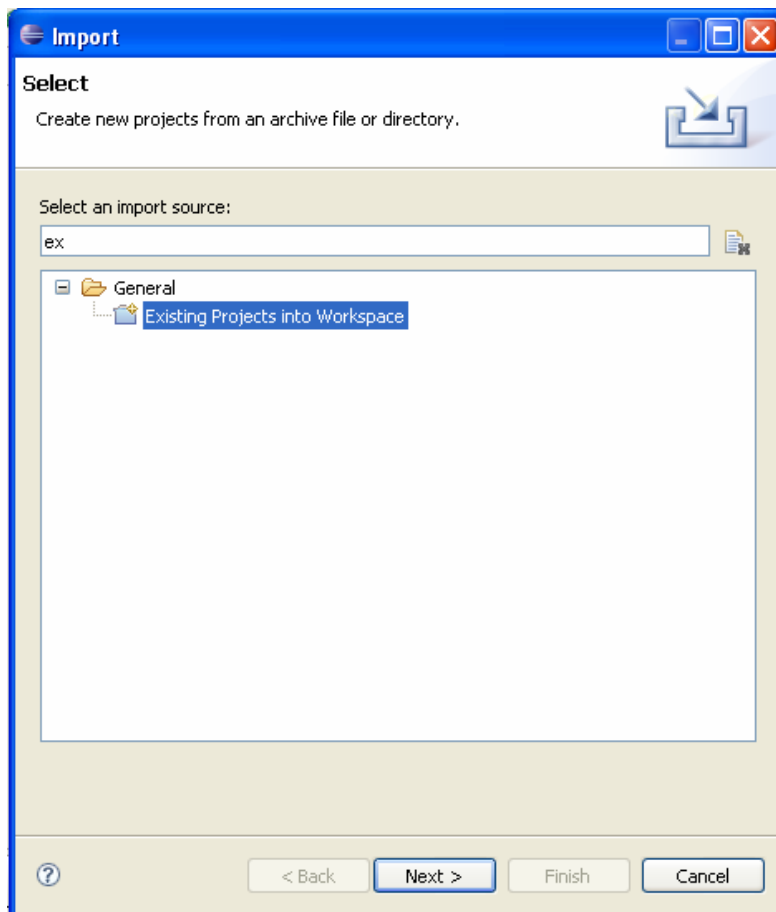
1.3.1 Import the server project

To install the server download it from the following location. Currently the server is just a simple web project. In later steps this will change allowing you to install it also as plug-in.

<http://mfdawn.sourceforge.net/DawnServer.zip>

After downloading the archive, just extract it to a temporarily location. To import the server to your workspace select File->Import...

In the following wizard choose "Existing Project into workspace".



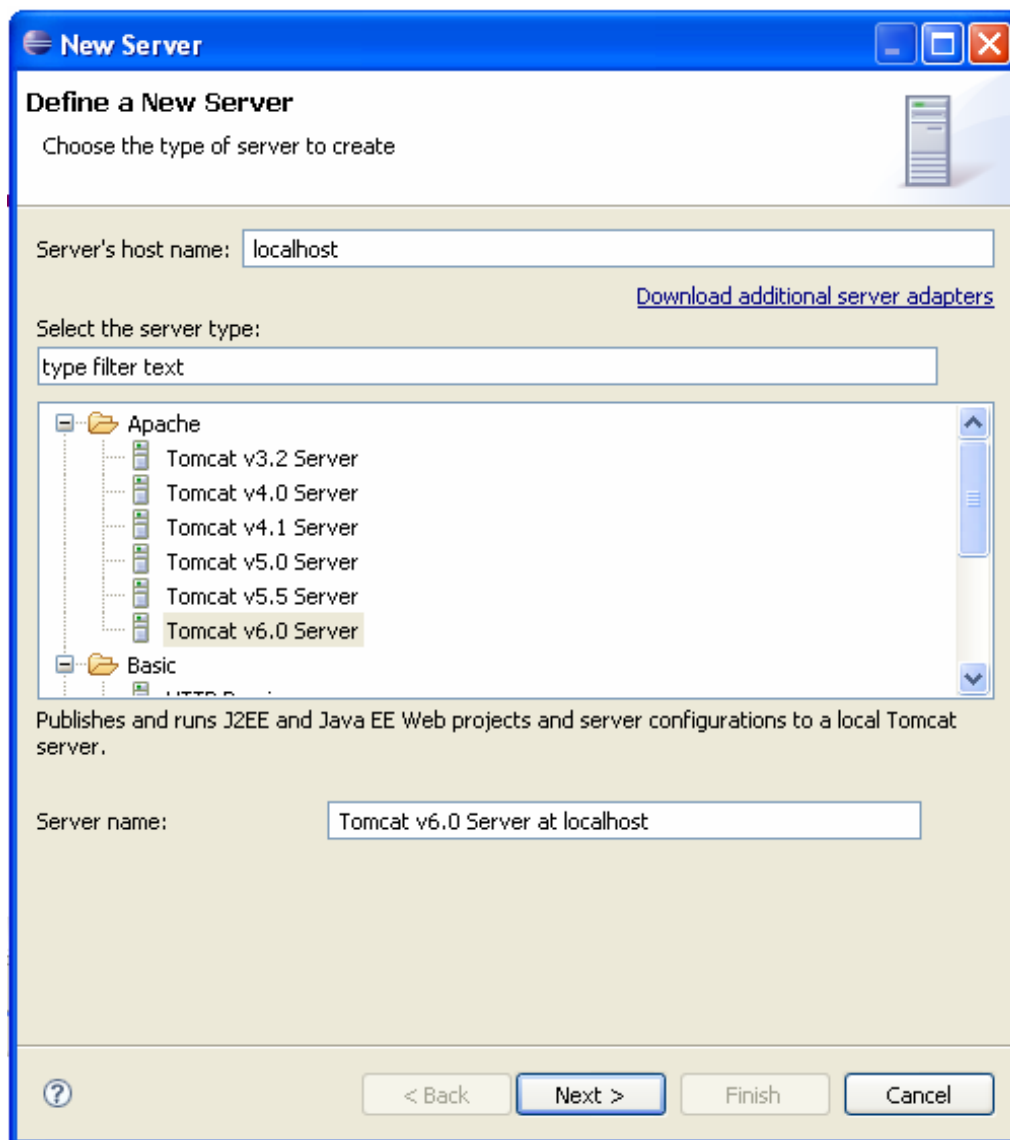
Select the folder which holds the extracted server and check the project. Do not forget to check the “Copy Project into workspace” button. Then click “Finish”

Now you have a “Dynamic Web Project” imported.

Currently the project shows error. To solve this create a new server where the project can be deployed in. Open the servers view (Window->Show View->others->server->Servers).

Right click the newly created view and select “New->Server”

Select which type of Servlet-container/application Server you want to use. We will use Tomcat 6.0.



Select the folder where your Tomcat installation is stored.

New Server

Tomcat Server
Specify the installation directory

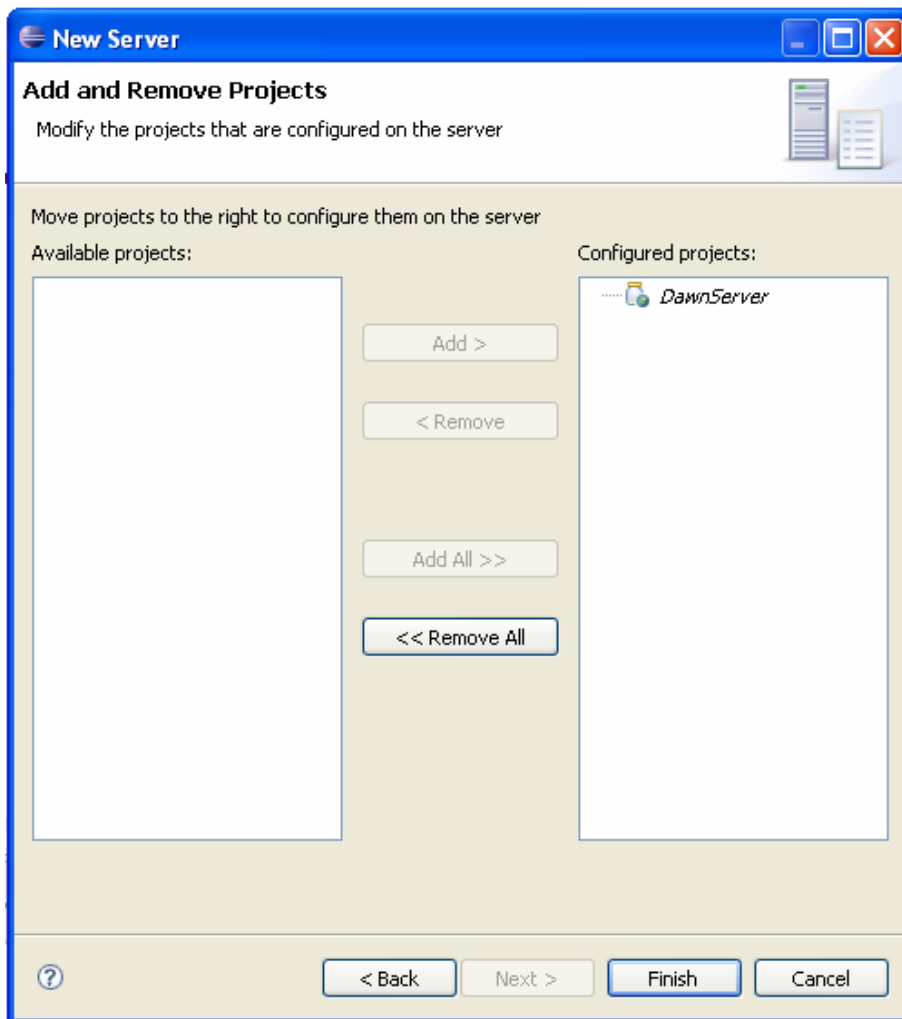
Name:
Apache Tomcat v6.0

Tomcat installation directory:
D:\Programme\Apache Software Foundation\Tomcat 6.0

apache-tomcat-6.0.14

JRE:
Workbench default JRE

Now add the dawn server to the configured projects.



The “important” error will disappear. Ignore the complaints about the HTML tag from the external library.

1.3.2 Initialize the database

To initialize the database, move to the “src” directory and open the “hibernate-cfg.xml”. Set the entries for your database.

```
<property name="connection.url">jdbc:mysql://localhost:3306/dawn</property>
  <property name="connection.username">root</property>
  <property name="connection.password"></property>
```

If you have not used mysql you need to change the db dialect.

```
<property
name="dialect">org.hibernate.dialect.MySQLInnoDBDialect</property>
```

To initialize the Database with the test default settings simply run `org.mftech.dawn.server.persistence.DBCreator`. This will initialize the database with some testing data.

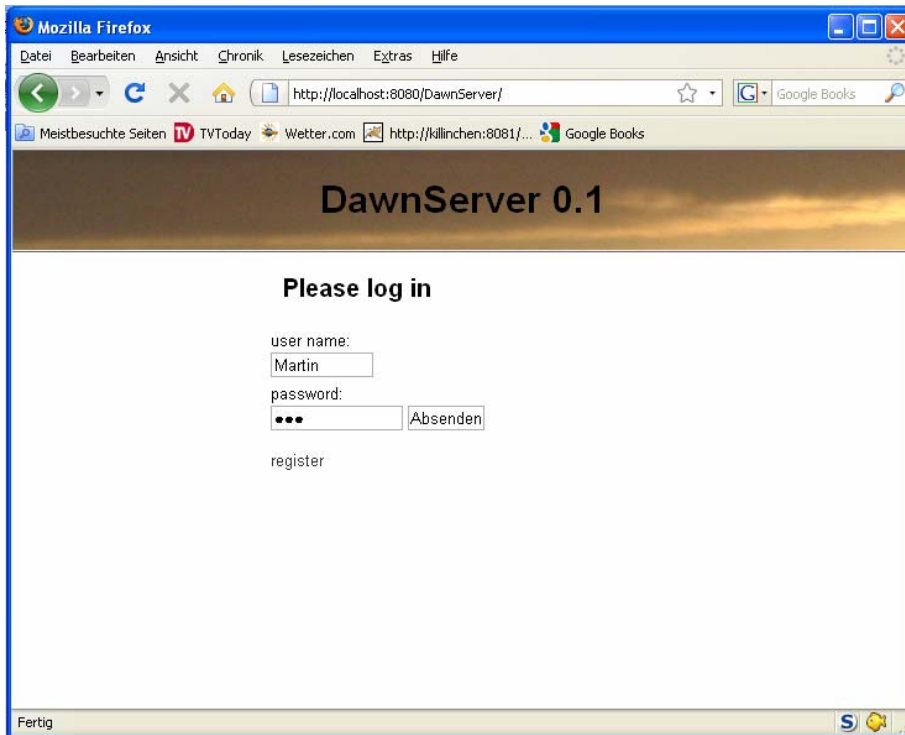
1.3.3 Start the server

Make sure that your database server is started. Now right-click the server in your Servers View and start it.

Now the server starts. After the starting procedure open your browser and go to

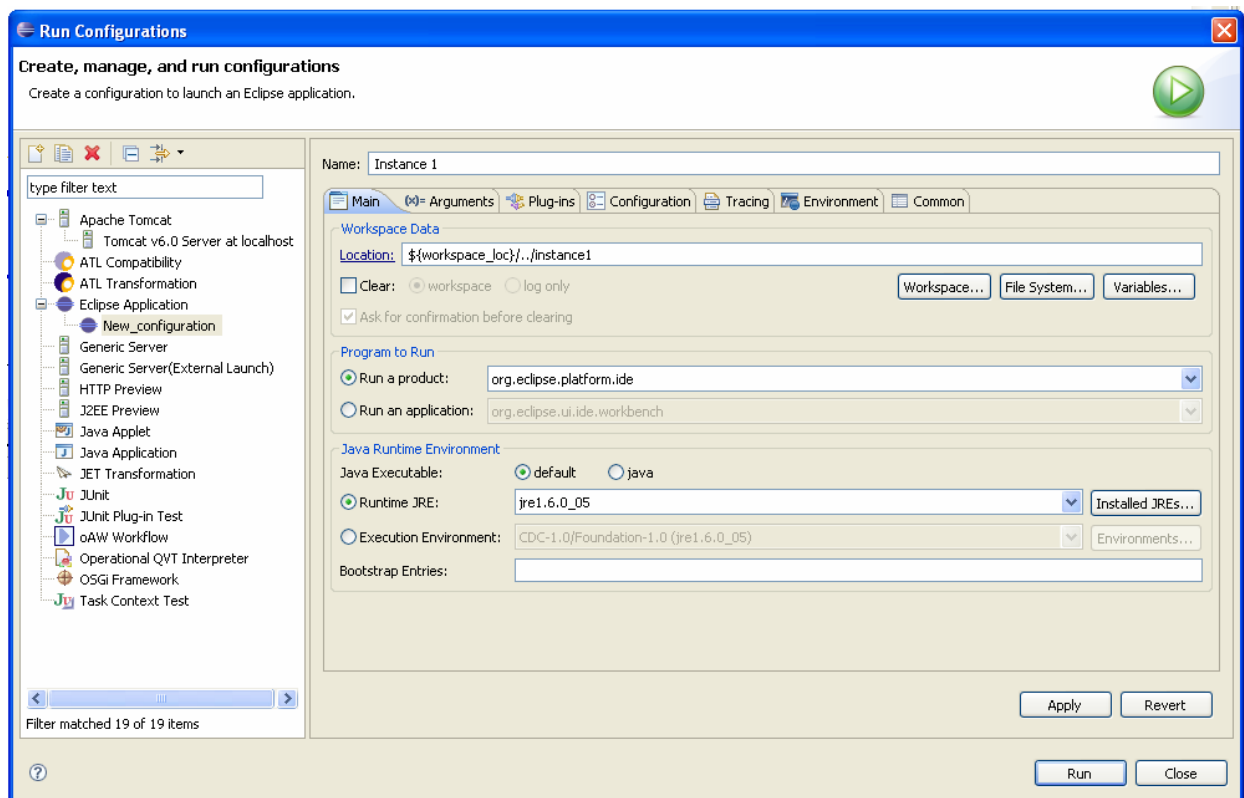
<http://localhost:8080/DawnServer/>

The following start page should appear:

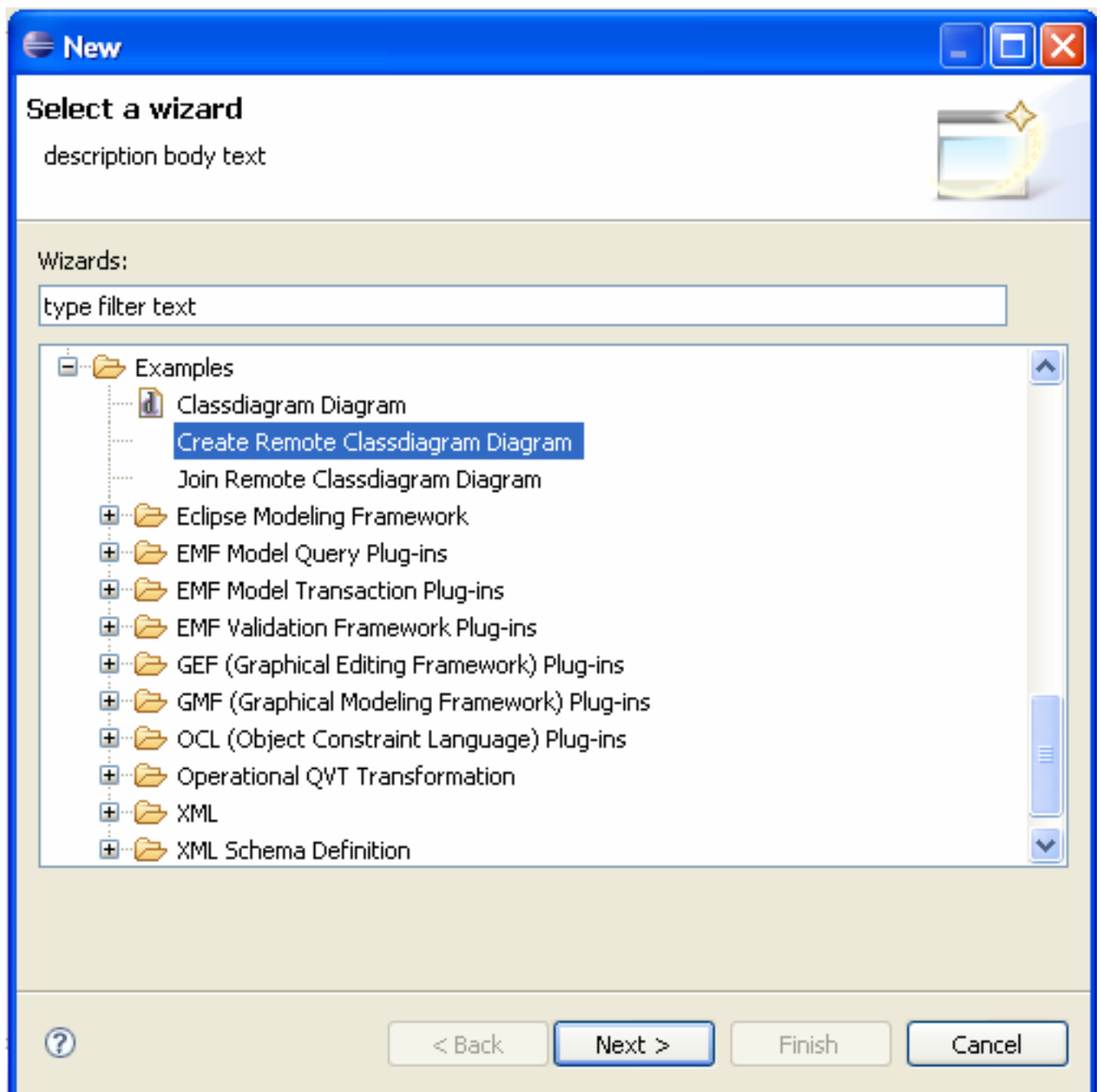


1.3.4 Starting the client

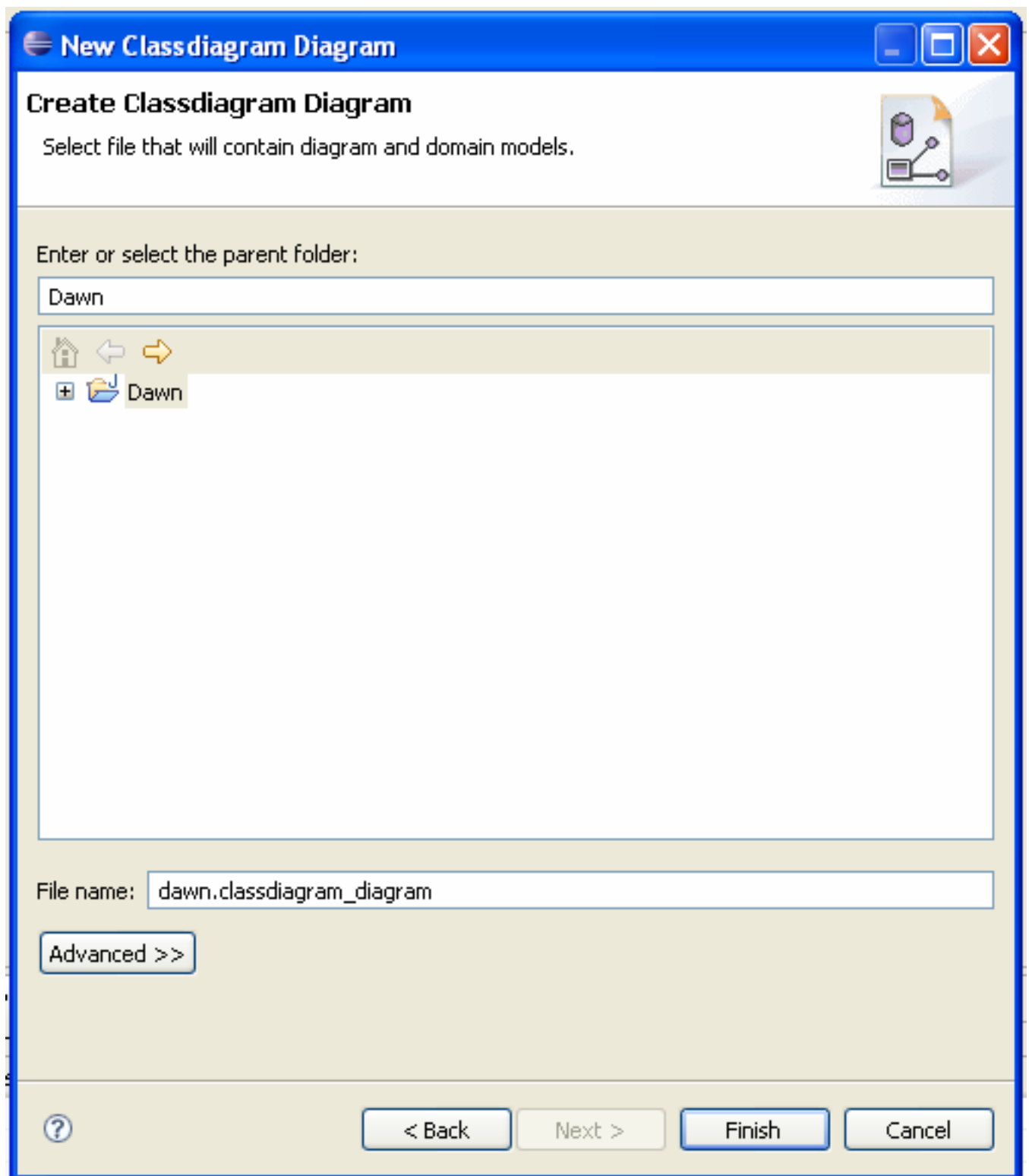
To start the client, create a new run configuration (Run->Run Configuration). Name it "Instance 1" and set also the location to "instance1"



Create a new Java Project called "Dawn". Now create a remote diagram. New->other...->Examples->Create Remote Class Diagram



Name the project “**test.classdiagram_diagram**” and click “Finish”



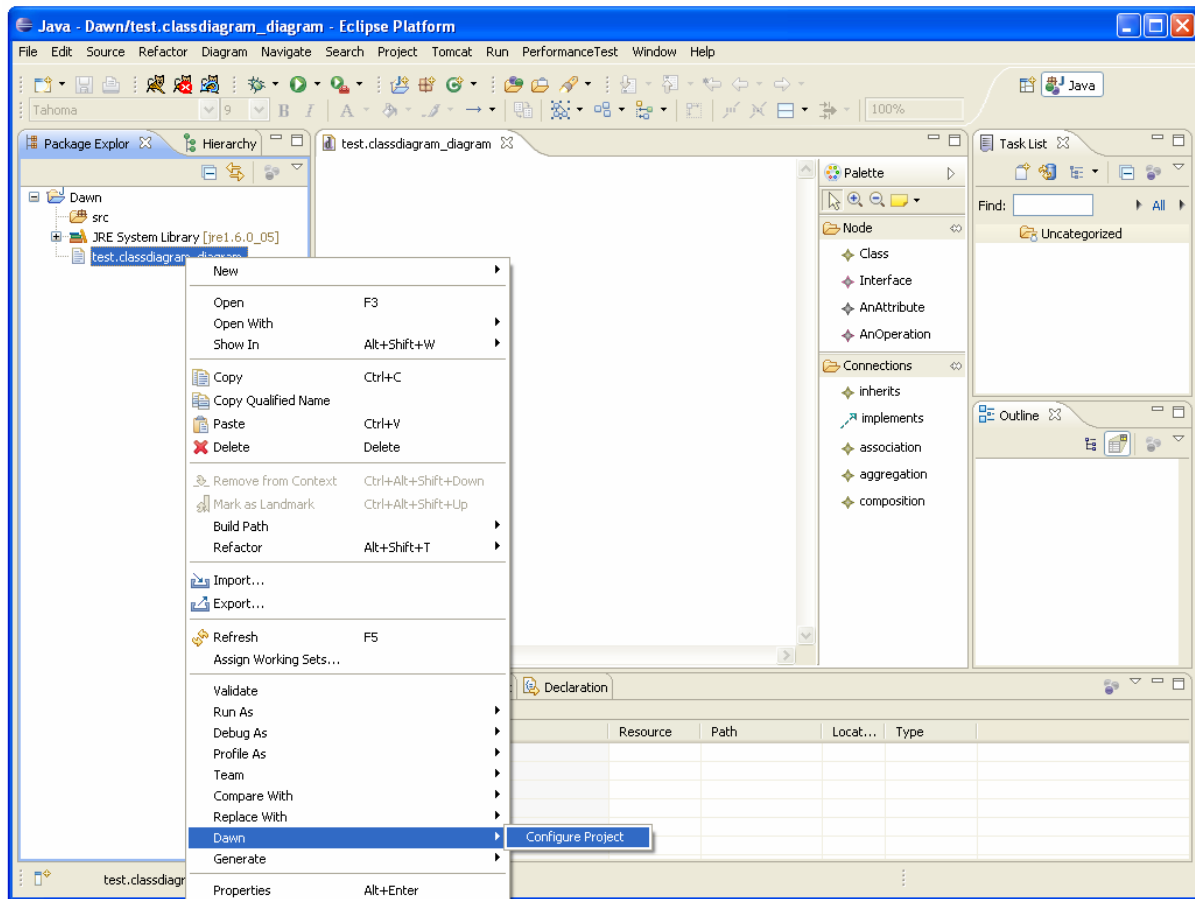
Now you must login. The account for the sample user is

User: Martin

PW: 123

By now we have created to diagram for one user. But to work collaborative we will need a second one. This second user has to be assigned to the current diagram. To achiev this we will

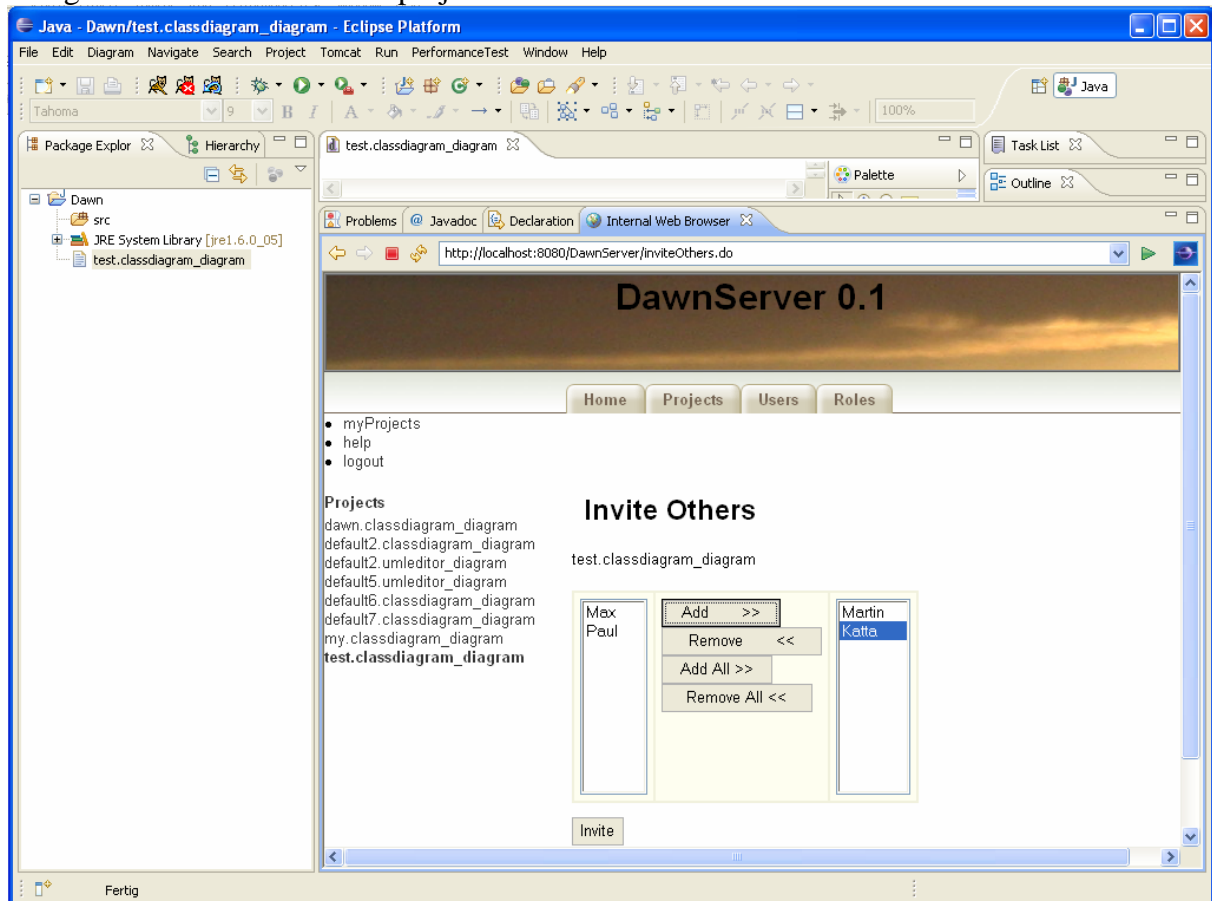
use the WebConfig GUI. But it would be very annoying to switch to a browser, log into the server, navigate to the project and edit the settings. That's why you can access the web interface directly from Eclipse. Right-click the currently created diagram file. You will find a new menu (Dawn->Configure Project)



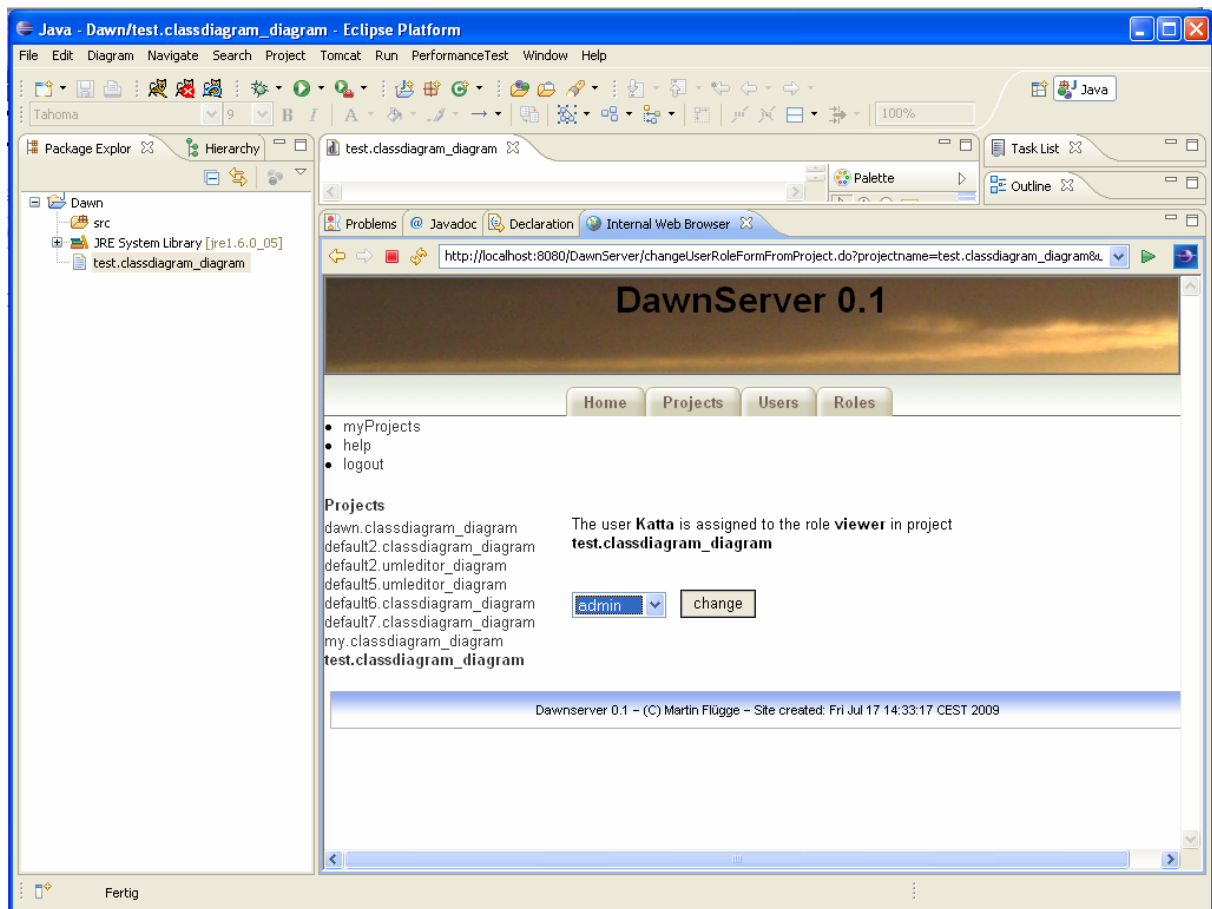
In Eclipse a browser window will open which automatically navigates to the correct project. To invite other user just click “Invite others”



Assign the user “Katta” to the project.



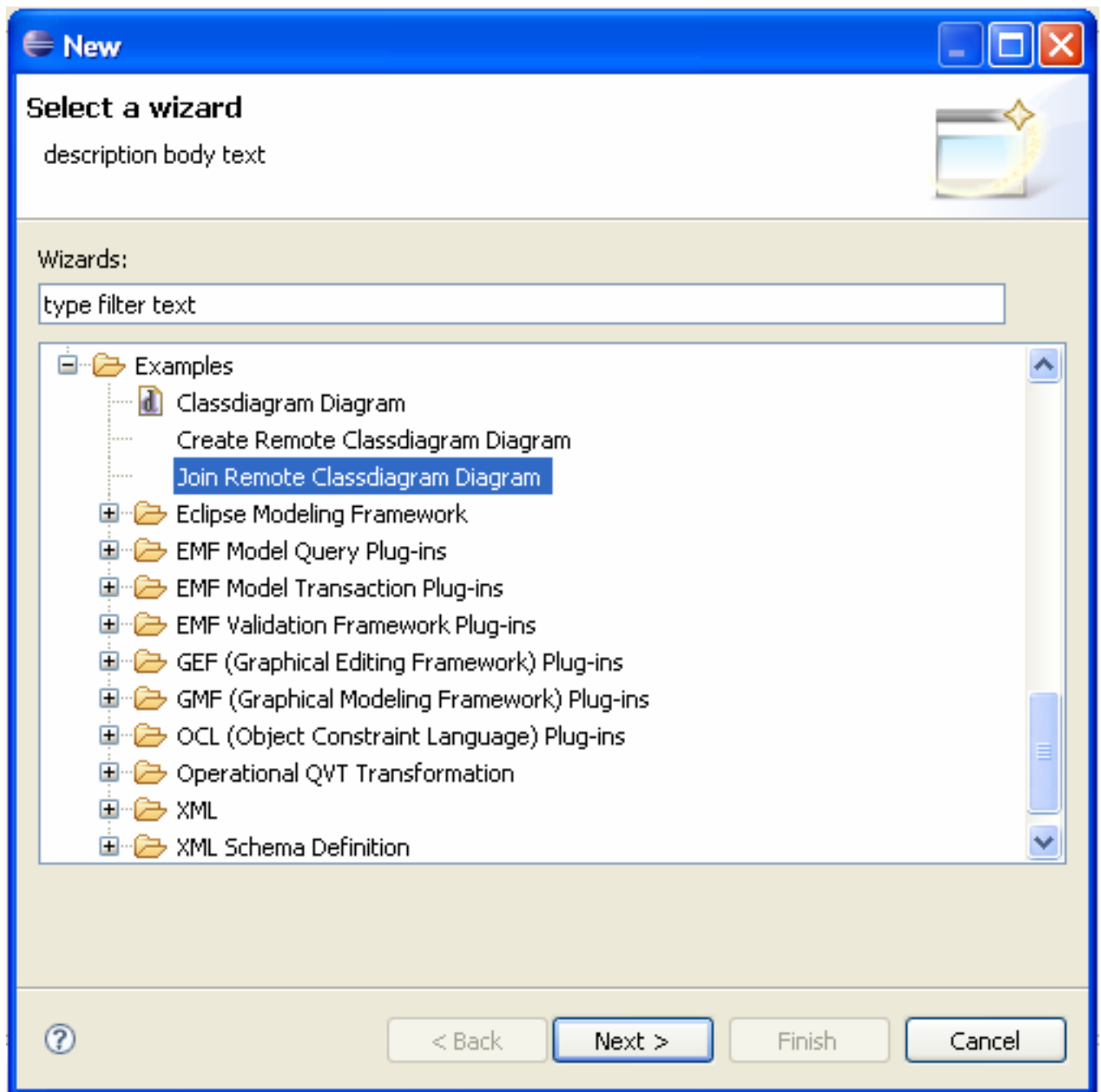
Next we will change the user rights of the new user. Simply click the configure Role link in the users row. Change the role “form” viewer to “admin”.



Now that we have a second user assigned to the project we can open a second Eclipse instance. Just create a second launch configuration, name it “instance 2”. The best way to do this is to copy the first one.

Again create a Java Project called “Dawn” in the new workspace.

To join a remote diagram open New->Other->Examples->Join remote ClassDiagram Diagram

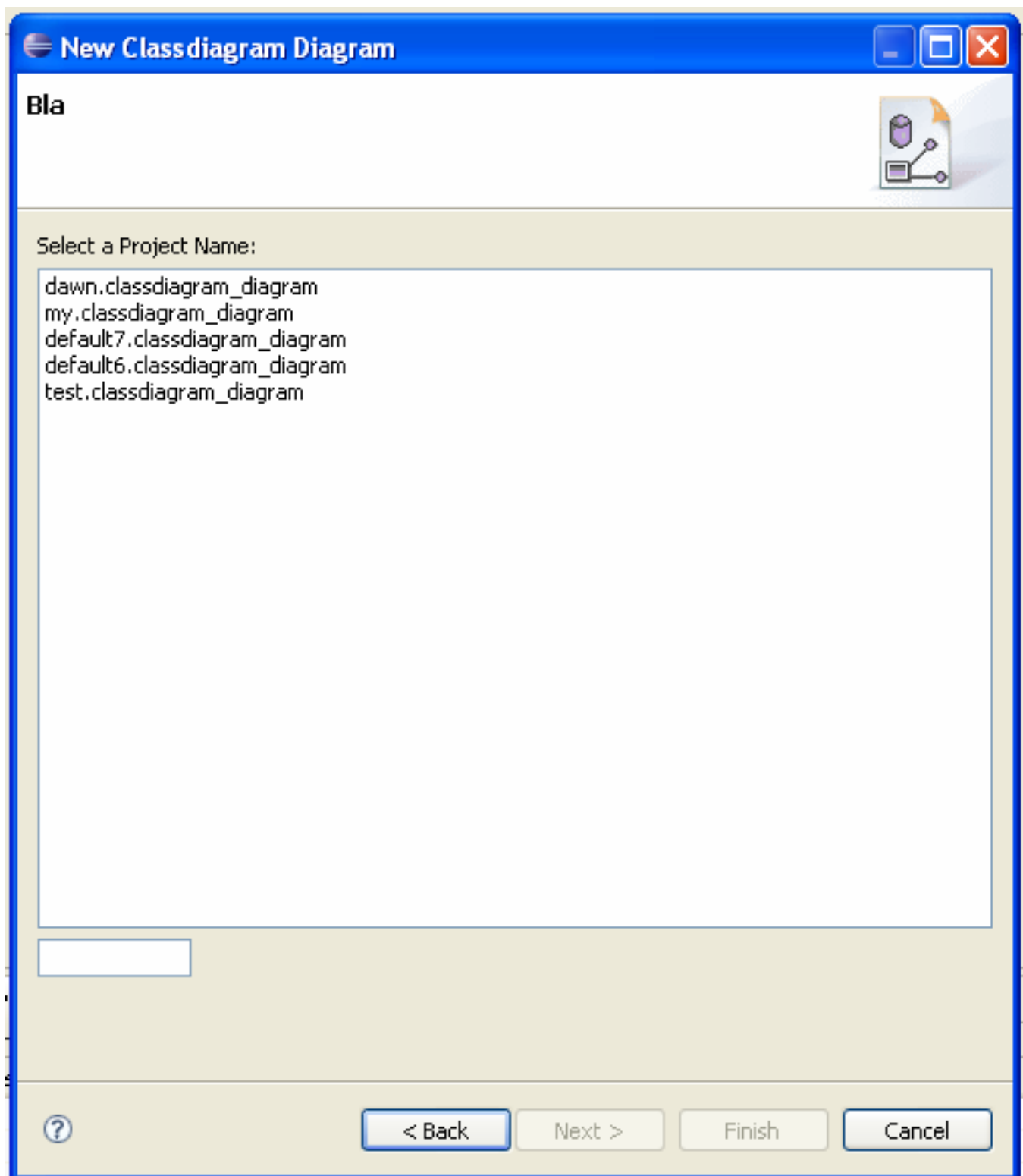


Again you will be asked for a password. This time the second user will log in.

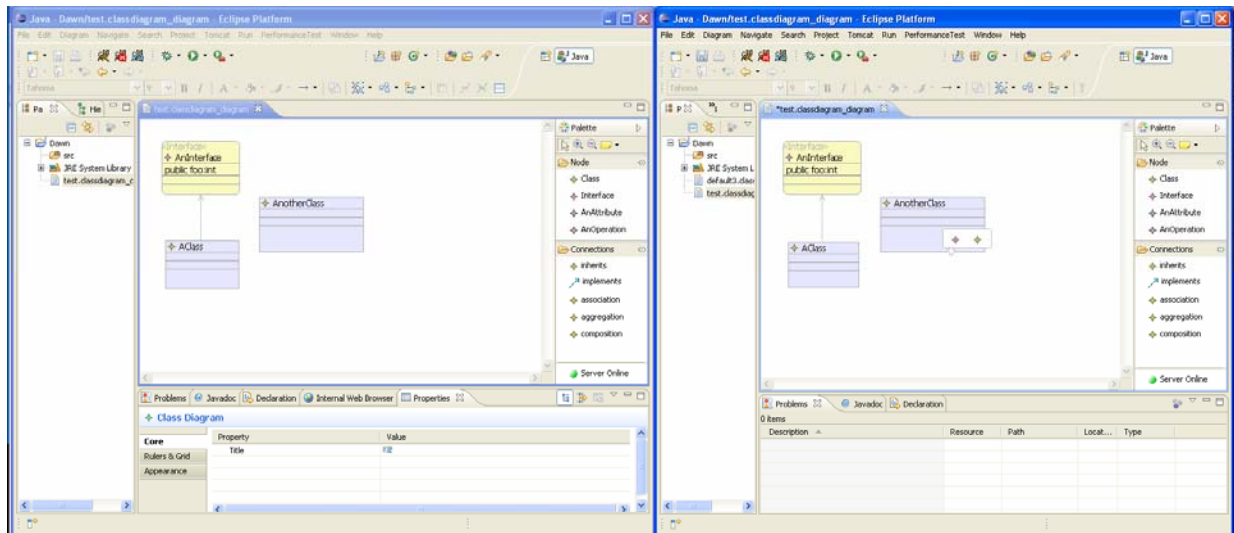
User: Katta

PW: 123

You will get a list of all available project for the user. Select the “test.classdiagram_diagram” and finish the wizard.



Now the diagram will be created in the other client. Just play a bit around and create some Interfaces or Classes in the example editor. But please keep in mind that this is only version 0.1 ;)



To work with the web-Viewer switch to your browser and open the webfrontend in it (<http://localhost:8080/DawnServer>). Log in with the given login and navigate to the “myProjects” tab. There you will find the currently created project “test.classdiagram_diagram”. Click the configure link.

Home
Projects
Users
Roles
myProjects
help
logout

Projects

bla.classdiagram_diagram
dawn.classdiagram_diagram
default2.classdiagram_diagram
default2.umleditor_diagram
default3.classdiagram_diagram
default5.umleditor_diagram
default6.classdiagram_diagram
default7.classdiagram_diagram
my.classdiagram_diagram
test.classdiagram_diagram

Projects:10

Project Name		
bla.classdiagram_diagram	configure	delete
dawn.classdiagram_diagram	configure	delete
default2.classdiagram_diagram	configure	delete
default2.umleditor_diagram	configure	delete
default3.classdiagram_diagram	configure	delete
default5.umleditor_diagram	configure	delete
default6.classdiagram_diagram	configure	delete
default7.classdiagram_diagram	configure	delete
my.classdiagram_diagram	configure	delete
test.classdiagram_diagram	configure	delete

You are now on the configuration page for the project. Click the “work online” or the “work online enlarged” link to see your diagram in the browser.

Home
Projects
Users
Roles
myProjects
help
logout

Projects
bla.classdiagram_diagram
dawn.classdiagram_diagram
default2.classdiagram_diagram
default2.umliterator_diagram
default3.classdiagram_diagram
default5.umliterator_diagram
default6.classdiagram_diagram
default7.classdiagram_diagram
my.classdiagram_diagram
test.classdiagram_diagram

basic information

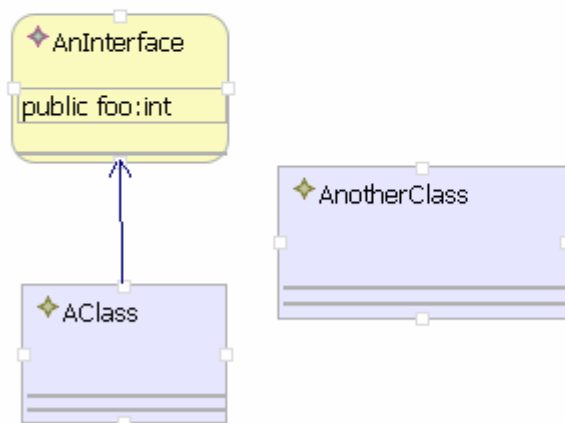
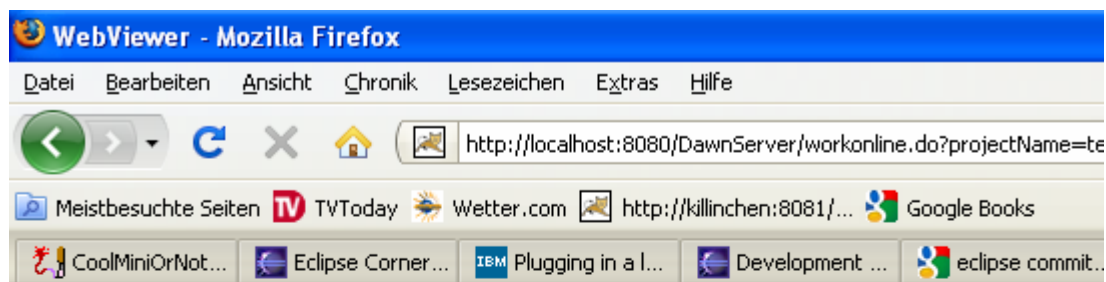
ProjectName	test.classdiagram_diagram
Creator	Martin

Users

username	role	i	u	d	
Martin (1)	admin	true	true	true	configure role
Katta (2)	admin	true	true	true	configure role

invite others
configure Roles
work online
work online enlarged

Play a bit around. Change a Node in your GMF-Editor and check what happens in the web. Or just move a node in your web browser (!) and examine the beginning of the web editor ;)



2 Troubleshooting

2.1 OutOfMemory...

If you experience OutOfMemoryExceptions in your client instance increase the memory in your RunConfiguration.

-Xmx1024M